



School Profile 2016/2017





School Profile 2016/2017

See Standards & Quality reports at <http://www.tarbert.argyll-bute.sch.uk/documents> for full details

<u>School Name</u>	Tarbert Academy
<u>School Address</u>	School Road, Tarbert PA29 6TE
<u>Head Teacher</u>	Neil McKnight

It is only 6 months since I last reported to the area Committee but I am delighted to report a much more stable staffing situation at Tarbert Academy (we are fully staffed 3-18 for the first time since I started as HT) and another very good set of attainment results.

Primary numbers are continuing to increase which has resulted in an increase of staffing and allocation of a Principal Teacher post.

The Parental Engagement project carried out by our Early Level team last year was very successful and we aim to carry forward some of the learning to improve parental engagement throughout the rest of the school. The project made it into the final of the Scottish Government Quality Improvement awards which is very exciting. The following links provide details of the awards:

<http://www.gov.scot/Topics/People/Young-People/early-years/early-years-collaborative/quality-improvement-awards>

<http://www.earlyyears collaborative.co.uk>

We had some major works over the summer to build our new Biomass unit and this will help us on our way to our third Green Flag.

As you will see from the attainment data below, we continue to produce high attaining young people with the skills to take them on to positive destinations post school.

Recognising Wider Achievement

Further to my comments in April re wider achievement opportunities available at Tarbert Academy, I am happy to report a very pleasing summary of wider achievement for last year:

Agency	SCQF Level	COURSE/ LEVEL	S2	S3	S4	S5	S6	TOTAL
Duke of Edinburgh		Bronze			8			8
Duke of Edinburgh		Silver			5			5
Duke of Edinburgh		Gold			2			2
Saltire		SALTIRE			4			4
Open University	7	YASS					1	1
Youth Achievement Award	4	Bronze			2			2
John Muir			17					17
SQA	5	Leadership					10	10

SQA Performance

As usual, we had some excellent individual performances:

One S6 pupil achieving grade A in one Advanced Higher and two Highers;

Four pupils passing five Highers in one sitting and one of them achieving an outstanding five A grades;

Five S4 pupils passing nine National 5s and two of them achieving an outstanding eight A grades.

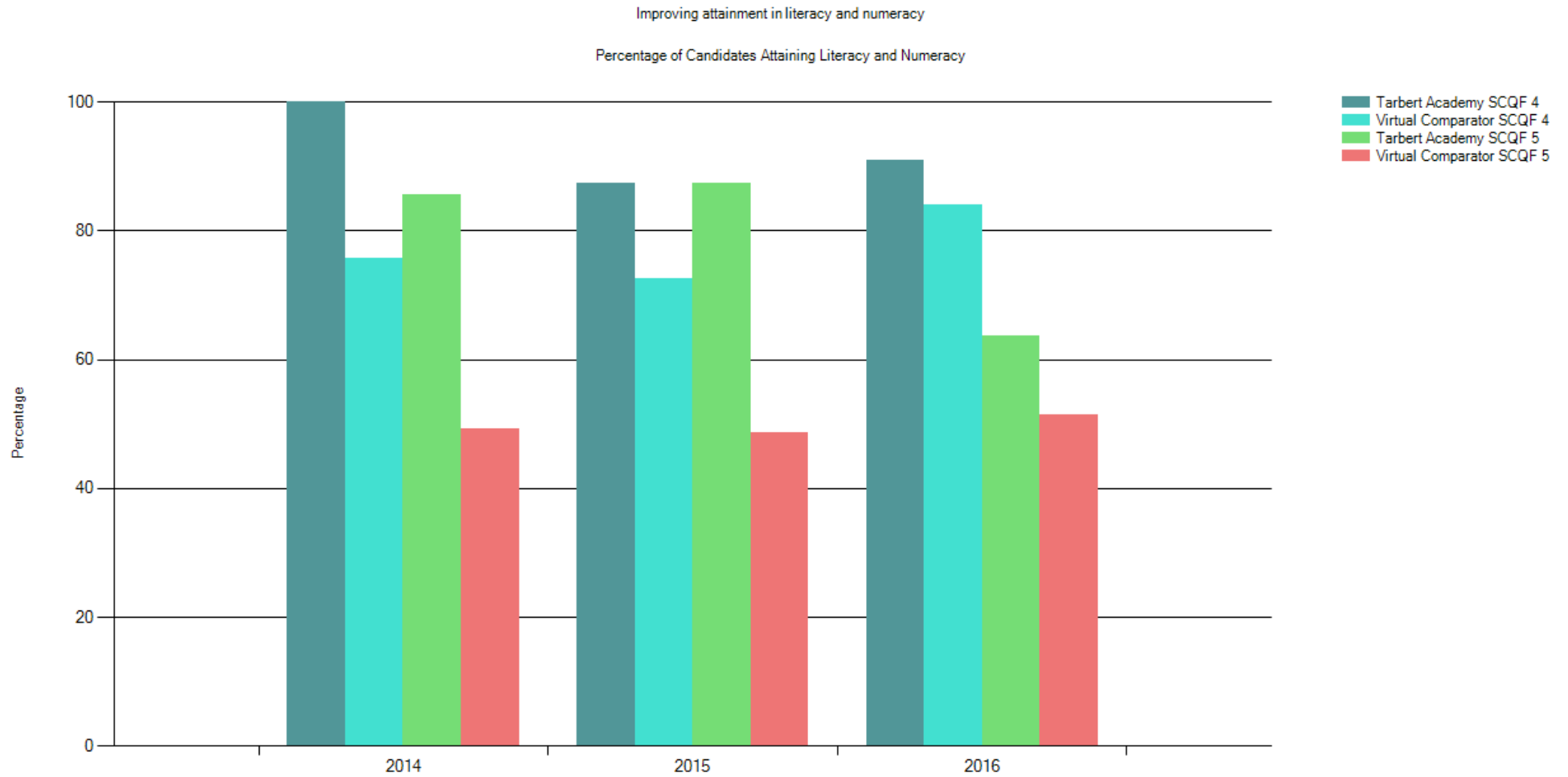
We are pleased that pass rates (A-C) in N5 and H have improved from last year while our 100% pass rate at N4 and AH has been maintained:

N5 level has increased from 74.6% to 85.7% a gain of 11.1%

Higher level has increased from 75.4% to 81.7% a gain of 6.3%

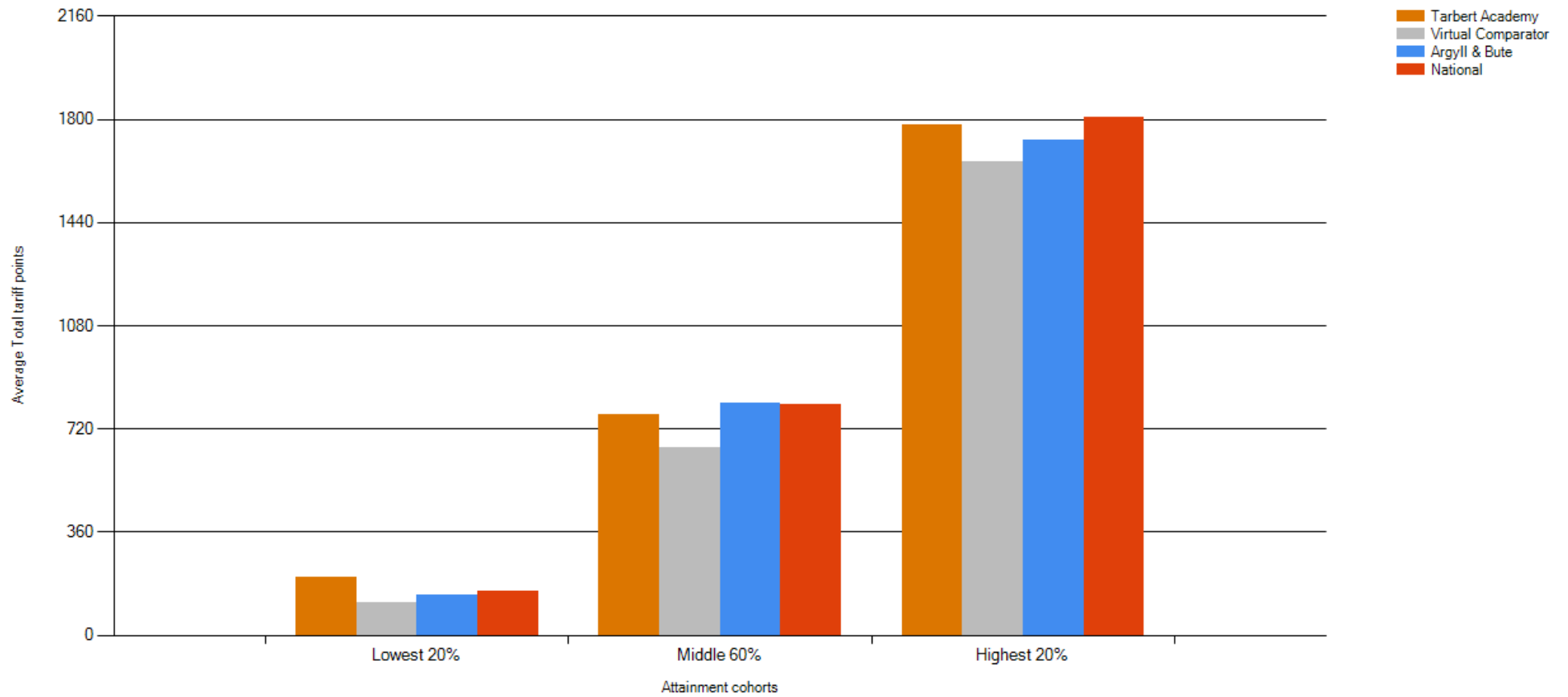
Course	13/14 (A-C)			14/15(A-C)			15/16 (A-C)		
	A & B Average (%)	National Average (%)	Tarbert Academy	A & B Average (%)	National Average (%)	Tarbert Academy	A & B Average (%)	National Average (%)	Tarbert Academy
National 4	100.00%	93.00%	100.00%	94.70%	93.30%	100.00%	96.17%	93.20%	100.00%
National 5	82.00%	81.10%	87.50%	74.80%	79.80%	74.60%	76.23%	79.40%	85.70%
Higher	76.90%	77.10%	84.10%	76.80%	78.10%	75.40%	78.29%	77.20%	81.70%
Adv Higher	79.00%	81.00%	90.90%	83.60%	78.50%	100.00%	75.22%	81.70%	100.00%

The following charts are based on achievement by S6 as % of S4 year group



Improving attainment for all

Average Total Tariff Points

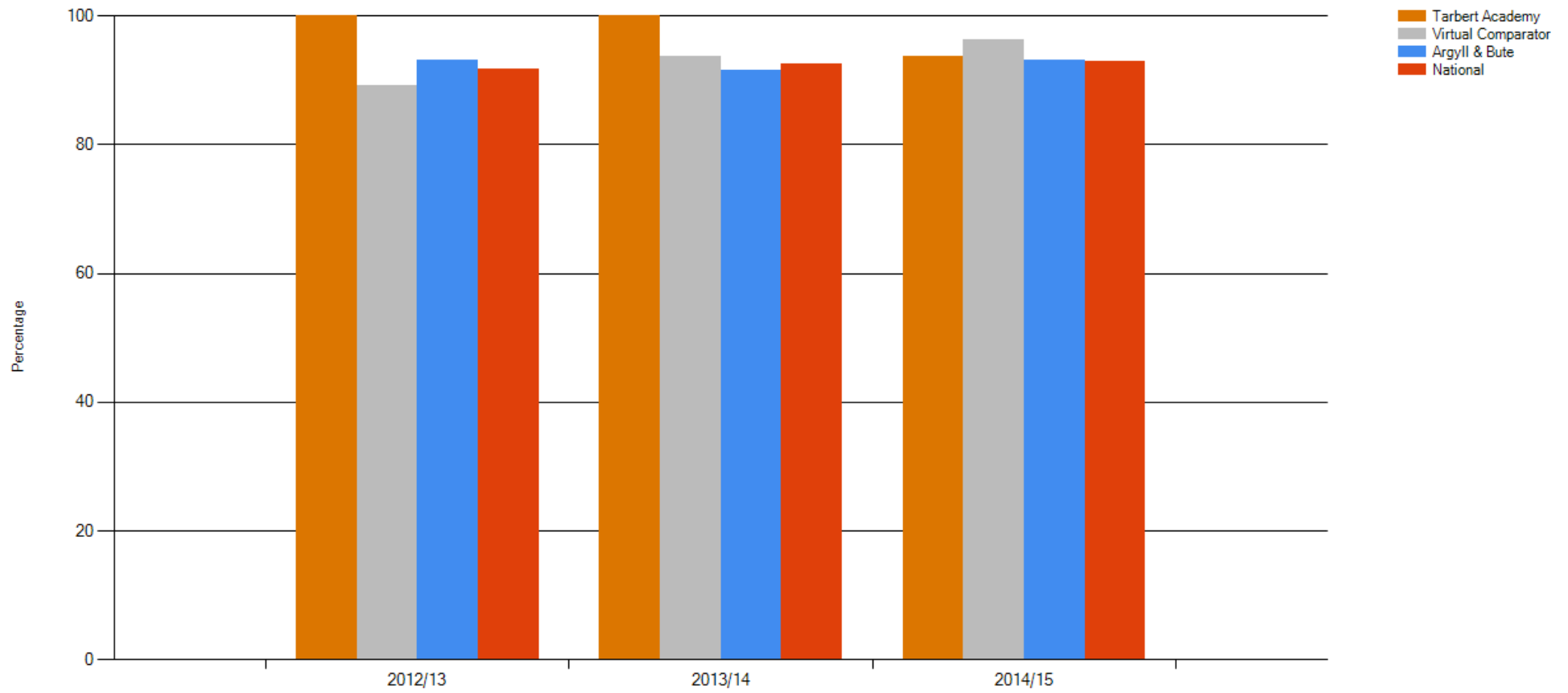


School Leaver Destination Returns (SLDR)⁴

Measure	11/12	12/13	13/14	14/15	15/16
Number of Total Leavers	22	11	19	16	Data not yet collated
Number of Young People entering Higher Education (%)	31.8%	45.5%	63.2%	43.8%	
Number of Young People entering Further Education (%)	22.7%	18.2%	15.8%	18.8%	
Number of Young People entering Training (%)	0.0%	0.0%	0.0%		
Number of Young People gaining Employment (%)	40.9%	36.4%	21.1%	31.3%	
Number of Young People gaining Voluntary Work (%)	0.0%	0.0%	0.0%		
Number of Young People entering Activity Agreements (%)	0.0%	0.0%	0.0%		
Number of Young People - Unemployed Seeking (%)	4.5%	0.0%	0.0%	6.3%	
Number of Young People - Unemployed Not Seeking (%)	0.0%	0.0%	0.0%		
Number of Young People - Unconfirmed (%)	0.0%	0.0%	0.0%		
Total number of young people in a Positive Destination (%)	95.5%	100.0%	100.0%	93.8%	
Total number of young people in Other Destination (%)	4.5%	0.0%	0.0%	6.3%	
Total number of young people in a Positive Destination (%) Authority Average	90.1%	92.5%	91.0%	93.1%	
Total number of young people in Other Destination (%) Authority Average	9.9%	7.6%	9.0%	6.9%	
Total number of young people in a Positive Destination (%) National Average	89.9%	91.4%	92.3%	92.9%	
Total number of young people in Other Destination (%) National Average	10.1%	8.6%	7.7%	7.1%	

Increasing post-school participation

Percentage of School Leavers in a Positive Destination



Tarbert Academy

Overview

Measure	11/12	12/13	13/14	14/15	15/16	% change in Roll over 5 years
Roll (as at census)	110	104	106	107	108	-1.82%
Clothing and Footwear Grant (number of pupils)	8	10	14	17	15	
Clothing and Footwear Grant (% of number of pupils)	7.3%	9.6%	13.2%	15.9%	13.89%	
Clothing and Footwear Grant (%) - Authority Average ⁵	7.56	8.51	9.54	15.60	na	
Free School Meals (number of pupils)	no data	11	13	12	13	
Free School Meals (% of number of pupils)	no data	10.6%	12.3%	11.2%	12.04%	
Free School Meals (%) - Authority Average	na	13.1	12.0	10.8	na	
Free School Meal - National Average for Secondary Schools (%) ⁶	15.2	15.4	15.5	15.0	na	

Attendance, Absence and Exclusions⁷

Measure	12/13	13/14	14/15	15/16	Range of Attendance (%) over 4 years ⁸
Attendance:					4.19
Attendance (% of school roll)	94.29	93.49	92.01	90.10	
Authorised Absence (% of school roll) ⁹	4.69	4.89	5.68	6.75	
Unauthorised Absence (% of school roll)	0.98	1.55	2.09	2.88	
Attendance Number of Pupils (%) - Authority Average	93.15	93.1	92.64	91.8	
Attendance Number of Pupils (%) - National Average ¹⁰	93.6%	not collated	93.7	NA	

Measure		12/13	13/14	14/15	15/16
<i>Exclusions: secondary school</i>					
Exclusion Openings		na	32	86	107
Exclusion Incidents		na	9	36	25
Number of Pupils		na	6	10	8
Exclusion Incidents per 1000 pupils		38.46	84.91	181.82	231.48
Exclusion Incidents per 1000 pupils - Authority Average		51.39	52.46	39.81	na
Exclusion Incidents per 1000 pupils - National Average ¹⁰		58.3	not collated	not yet available	NA

Footnotes

Data will be anonymised to protect individuals where there are fewer than 5 pupils and or presentations.

SQA Please note that this data is based on current interim results. It does not take into account any updated results due to the SQA Post Result Services and therefore this data could change and is not reflective of leavers exit qualifications which are cumulative. Insight data is updated at the end of February that results post-results service outcomes.

¹ SQA Performance data was collected on 23rd November 2015 from SEEMiS Vision. Information previously provided in the SQA Authority Analysis reports for Committee will differ slightly to information provided here in order to ensure consistency of approach in collating data for comparative purposes.

^{1a} Please note that some schools operate a positive presentation policy whereby they present students, if at all possible or at parental request for higher units however this can impact both the percentage pass rate and the level of awards. Therefore care must be taken when comparing number of presentations to the percentage pass rate.

² Results up to and including 2012/13 national percentages were sourced from the Annual Statistics Report 2013 (available only as whole percentages). National percentages grades A-C for 2013/14 came from Attainment Statistics (December) 2014. National percentages for 2014/15 and grades A-D for 2013/14 came from Attainment Statistics (August) 2015. Documents produced by SQA.

³ 2013/2014 was the first year National 4 and National 5 Qualifications were offered as part of the SQA diet. Therefore no performance data is available prior to this date. 2014/2015 was the last academic year that Intermediate 1 and Intermediate 2 qualifications were offered as part of the SQA diet of examinations. They have been superseded by National 4 and National 5. Standard Grade qualifications were offered for the last time in 2012/2013 and were superseded by National 4 and National 5.

⁴ SLDR data is published by Skills Development Scotland (SDS) on behalf of The Scottish Government. The year runs from 1st August to 31st July each year and the data is collected on the 1st Monday in October each year. The data shown in this profile is the initial data collected.

- Higher Education includes HNC, HND and Degree courses
- Further Education includes Access, NPAs and Highers
- Training includes Employability Stage Funds 2 and 3 (previously called Get Ready for Work)
- Employment includes Modern Apprenticeships and any employment over 16 hours per week
- Voluntary includes Barnardos, Oxfam, Red Cross and community based volunteering
- Activity Agreements are for young people who are furthest removed from employment/training/education that are receiving mentoring support from a Trusted Professional
- Unemployment includes those young people who can't work through ill health, are caring for others or are pregnant

⁵ Clothing and Footwear Grant (CFG) is not shown as a National Average as each authority set their own criteria and therefore cannot be compared accurately. Figures are based on census roll figures.

⁶ National Averages for FSM have been taken from Summary statistics for attainment, leaver destinations and healthy living, No. 5: 2015 Edition,

⁷ Attendance, Absence and Exclusion information is now collected on a biennial basis by Scottish Government and was **not** collected for 2011/2012 or 2013/2014 academic year. Data was collected in August for session 2014/15 and is therefore not yet available.

⁸ Please note that Attendance and Exclusion data can only be compared over a 4 year period as academic session 2015/16 is not yet complete and therefore the data for these years may change. The 4 year percentage change compared 4 full years. Please note that session 2014/2015 figures have been updated from last year's report to show the final figure. This information is taken from SEEMiS Vision.

⁹ Authorised absence includes bereavement, short – term exceptional domestic situations, religious observance, weddings of immediate family. Unauthorised absence includes truancy, unexplained absence and most family holidays during term time. Attendance and absence is outlined in Management Circular 3.03.

¹⁰ National Averaged for Attendance and Exclusions for 2012/13 have been taken from Summary Statistics for Schools in Scotland, No.4 | 2013 Edition, 11th December, 2013 (amended 11th February 2014).